

# **Butte County Association of Governments (BCAG)**

## **2016 Regional Transportation Plan and Sustainable Communities Strategy EIR Scoping Meeting**

**September 29 and 30, 2015**



# Agenda

- ❑ Describe Regulatory Background
- ❑ Provide Project Overview
- ❑ Discuss Scope of Environmental Impact Report – Focus of this meeting

# Scoping Meeting Purpose

- ❑ Inform the community and concerned agencies about the project
- ❑ Solicit input regarding the EIR scope
- ❑ Inform the community about future opportunities for input

# CEQA Purpose

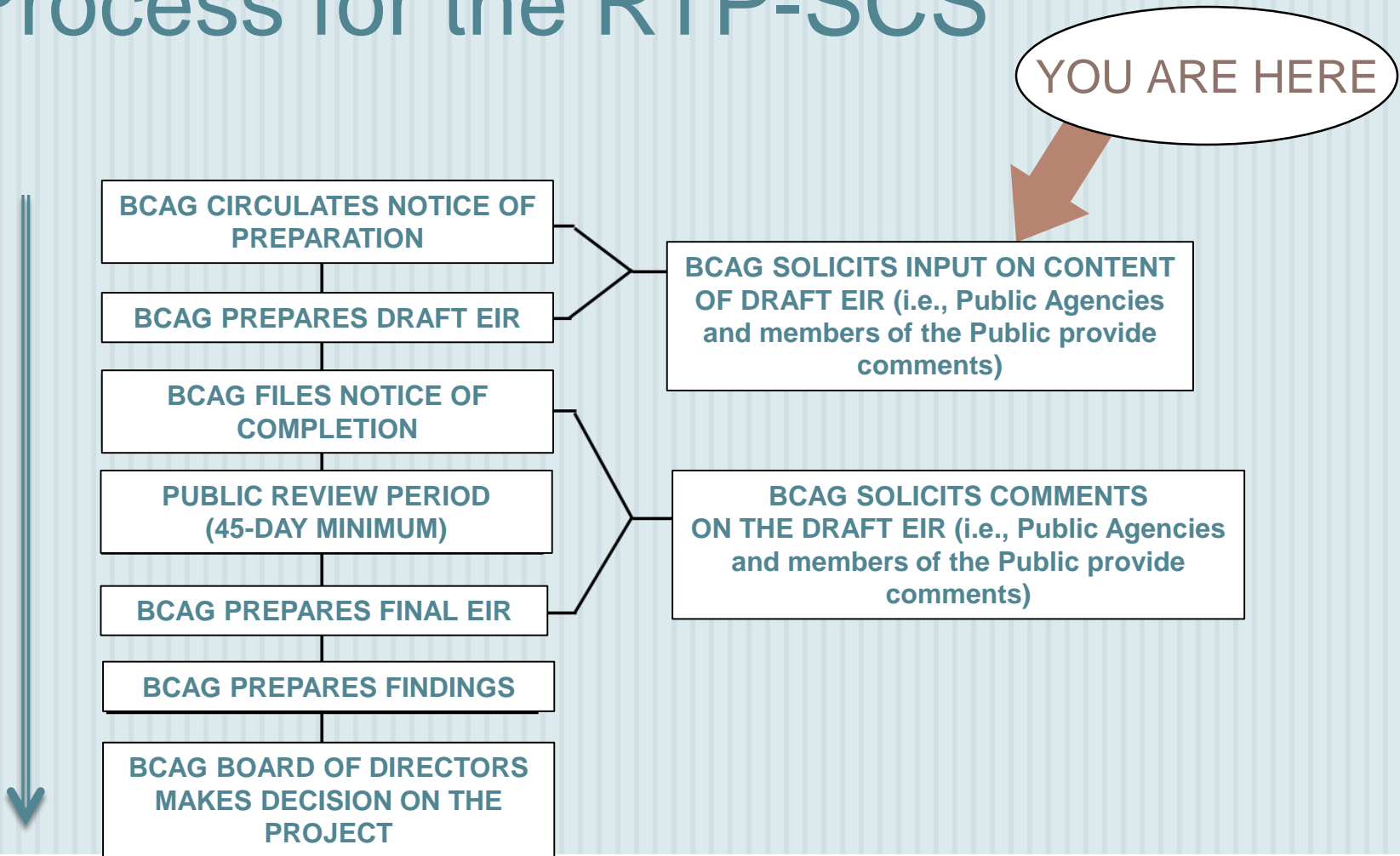
- ❑ Disclose the significant environmental effects of proposed actions
- ❑ Identify ways to avoid or reduce environmental impacts
- ❑ Consider feasible alternatives to proposed actions
- ❑ Enhance public participation in the planning process

# CEQA Environmental Review Process for the RTP-SCS

YOU ARE HERE

PROCESS

CEQA



# BCAG RTP and SCS Project Overview

## Regional Transportation Plan

- ❑ Long-range transportation planning document for the Butte County region
- ❑ Plan to meet the region's transportation goals regarding current and future mobility needs
- ❑ Addresses all transportation modes
- ❑ Guides transportation programming documents and plans
- ❑ Covers a 24-year planning horizon from 2016 to 2040

# BCAG RTP-SCS

## Project Overview (cont.)

### Sustainable Communities Strategy

- ❑ Required by State law Senate Bill 375 (SB 375)
- ❑ Plan to demonstrate how GHG reduction targets will be met through integrated land use, housing, and transportation planning
- ❑ Reduce GHG through alternative development patterns, infrastructure, or additional transportation measures or policies that result in fewer and/or shorter automobile and light truck trips
- ❑ Identify general land uses, residential densities, and building intensities as well as areas able to house future residents based on the General Plan land use and housing elements of the local agencies
- ❑ Must be consistent with Regional Housing Need Allocation (RHNA)

# EIR Approach

- ❑ Program EIR – broad, comprehensive evaluation to cover many actions, long-range plans
- ❑ Many transportation projects are not yet fully designed
- ❑ Many transportation projects will require additional environmental review



# EIR Approach (cont.)

- ❑ Any future land use changes by local agencies will require additional environmental review
- ❑ The EIR will screen which transportation projects are likely to result in environmental impacts
- ❑ Alternatives to the “Preferred” Plan will be evaluated and considered

# Issues to Be Analyzed in the EIR

- **Agricultural Resources**
- **Air Quality**
- **Biological Resources**
- **Cultural Resources**
- **Greenhouse Gas Emissions**
- **Noise**
- **Transportation/Traffic**

# Projected EIR Schedule

- ❑ October 15, 2015  
Last day to submit comments on EIR scope
- ❑ Spring 2016(tentatively April)  
Release of Draft EIR for public comment
- ❑ Summer / Fall 2016  
Public hearings on the Final EIR and RTP-SCS

# We Welcome Your Comments

By October 15<sup>th</sup>, please direct your comments to:

Brian Lasagna, Senior Planner  
Butte County Association of Governments  
2580 Sierra Sunrise Terrace, Suite 100,  
Chico, CA 95928  
blasagna@bcag.org

For more information, visit <http://www.bcag.org/Planning/MTP-SCS/index.html> or call: (530) 879-2468

Thank you for participating!

